



REFRESH, UPGRADE, PERFORM

Tile production line improvements



HMI UPGRADE

SACMI for easiness real time info

Installation of a new 19" touch-screen operator panel.

This panel can be mounted in electrical panels with Profibus automation.



ADVANTAGES

- Clear and immediate user interface
- No need of the mouse and keyboard currently used in Citect HMIs
- It incorporates the latest plant improvements
(power regulation / water density / toughening agent / sieve washing etc.)
- Connection with new generation factory supervisors and other units in the department
(recipe management, users, maintenance, etc.)

See other revamping
solutions for body preparation





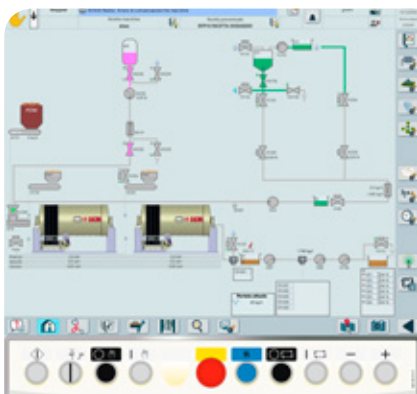
REFRESH, UPGRADE, PERFORM

Tile production line improvements



HMI UPGRADE

Technical features



Panels with Profibus automation are replaced with a new panel, which allows you to obtain:

- **Touchscreen**
- Improved operation and new **push-button panel**
- Improved **percentage recipe** management
- Precise **diagnostics** on each device

Replacing the control panel with the latest generation of Powerlink automation makes it possible to obtain:

- Control of the **parameter setting** of the module inverters
- Integrated **connectivity** with mass flow meters
- Raw material belt **calibration** page

